

Southwest Nordic Center
PO Box 3212
Taos, NM 87571
(575) 758-4761
yurt@newmex.com

Overnight What to Bring List

Yurt door lock combination
Yurt confirmation packet
Skis or snowshoes, boots, and poles
Waxes or Maxiglide
Climbing Skins-
Backpack- preferably an internal frame
Sleeping Bag- as warm as you have
Warm Hat- one that covers your ears
Mittens and/or Gloves- mittens are warmer
Wool Socks
Scarf or neck gaiter
Long Underwear- both top and bottoms
Pants- No jeans. Wool, thinsulate, pile, or polypropylene are fine
Shirt
Sweater
Vest
Jacket- insulated
Wind and/or Waterproof Shell- both top and bottom
Gaiters
Sunglasses
Sunblock
Day Pack
Map and Compass
Phone- watch, route finding apps, camera all in one
Phone charger
First Aid Kit
Ski Repair Kit
Avalanche transceiver if looking for steep turns
Shovel(s)- one big enough to dig in or out your car as well as one for skiing/boarding
Food
Water
Booties or Hut Slippers
Head lamp or flashlight
Toilet Paper- this is at the Yurt also
Toothbrush and Paste
Soap- biodegradable only

The way to dress for cross-country skiing is to wear layers. This will enable you to stay warm without getting too hot or cold. The above list takes this into account. The list is complete as to required items and includes some personal items also. You are welcome to bring other items as you choose. Remember: Even if the weather is sunny in town or at the trailhead you should still bring plenty of warm clothes.

What is at the Yurt

This list is intended to serve as a reference for what you can expect to find at the yurt. It does not represent an inventory of items but rather as assistance to guide your preparations.

Kitchen:

The yurt comes equipped with a three-burner propane cook stove. There is a propane tank at the yurt. There is not an oven at the yurt. There are pots and pans, plates, bowls, silverware, utensils, measuring cups and spoons, water glasses, coffee cups, wine glasses, melitta coffee filters and cone, thermos, hot pads, kitchen towels, paper towels, garbage bags, dish soap, scrubbies, spices, salt and pepper.

Lighting:

Flat Mtn Yurt comes with two propane lanterns that operate with disposable propane canisters, which are provided. A spare lantern, globe, and mantles are provided as well. Trujillo Meadows Yurt has a solar light system and a rechargeable lantern in addition to the propane lanterns.

Sleeping:

The yurt is set up to accommodate up to 6 persons. The arrangement is two bunk beds with two mattresses on each with two extra mattresses, which can be put on the floor when needed. There are 6 pillows/cases provided.

Warmth:

The yurt comes equipped with an airtight woodstove, with a glass window for ambiance. Firewood is provided. There is newspaper and matches provided as well for fire starting. Sleeping bags and blankets are not provided.

Toilet:

There is an outhouse for going to the bathroom. The toilet seat resides in the yurt so as to keep it warm for when needed. Toilet paper is provided. There is lime in the outhouse for spreading when finished.

Water:

Water is by snowmelt. There are 2 large pots, which live on the woodstove for melting snow for cooking, drinking, and doing dishes. There are other large pots for collecting snow. It is recommended that all drinking water be boiled or filtered. It is easy to cool down by putting covered pots outside.

Games:

There are some games provided at the yurt. It is attempted to have cards, cribbage, Jenga, Yahtzee, chess, checkers, and backgammon. Every season is rough on the game boxes but the contents should be there.

Table:

There is a table and benches for eating and hanging around. The benches are not padded.

Accessories:

There is a broom, mop and bucket, hatchet, axe, maul, snow shovel, and digging shovel. These will help with managing the snow around the yurt and keeping the yurt tidy inside.

The Southwest Nordic Center welcomes you to our yurt system. Great effort has gone into making our yurts warm and comfortable for your stay. Below are a number of items that will require your attention. Please follow the recommendations for handling of wastes so as to keep the environment safe for groups that will follow (it's worth the extra effort). Please be careful with fire at the yurts and enjoy your stay.

Yurt Maintenance-

Arriving- Check-in time is 1:30 PM. Please use the shovel and/or broom to clear any snow off the deck and stairs. Take care not to dig into the deck when chipping ice. You will want to clear a path to the outhouse, and then clear any snow from its roof. A decent path to the outhouse will make using it easier. You will also want to clear as much snow as possible from the roof of the yurt, especially over the door so as to assure its free movement. Please be careful not to tear the roof in the process. **Please do not break the snow shovel.** We all know that you are stronger than it is.

Water- supply is by snowmelt, so **No Dogs** at the yurt. Snow may be collected anywhere in the vicinity of the yurt. Care should be taken to select only clean, pure snow. The snow may be melted in the large pot on the wood stove. Take care not to burn the snow when melting or there will be an off taste to the water. It is recommended to boil water to purify it. Filtering will purify and make it taste better.

Warmth- an airtight wood stove has been installed for your comfort. Remove excess ashes from the stove before starting a fire. A metal container is kept behind the stove for this purpose. Empty the ashes into the outhouse hole. Paper is provided and kindling may be chopped on a stump on the deck. When stoking the fire, first rake the coals to the front of the stove before adding more wood. Do not leave the stove door open during burning and whenever you leave the yurt be sure that the stove is turned down completely. The damper is opened by pulling the gold knob out from the wood stove. Split wood to be burned is stacked inside next to the wood stove and on the wood deck at the south end of the yurt deck. There is a cover on the wood to keep it drier. If you have trouble getting a fire started then utilize smaller pieces in the stove until a blaze is created.

Cooking- the gas cook stove uses propane. To use the gas cook stove, you must first turn on the valve on the propane tank on the deck. Please do not overturn this valve! Second, turn the valve next to the outside regulator in-line with the hose. Next turn on the valve in-line located where the hose attaches to the stove's regulator inside the yurt. Please close the inside valve whenever the cook stove is not in use for extended periods i.e. overnight and during the day. Turn off both valves when you finish your visit. Do not use all three burners for extended periods. This will cause the propane tank to lose pressure and quit working. If you encounter an unsolvable problem with the cook stove there is a back-up two burner stove in the Yurt Maintenance box underneath the bunk opposite the kitchen. This stove uses the same propane cans as the lanterns. Put a hot pad under hot pots and pans when setting them on wood surfaces.

Dishes- there are two 5-gallon stainless steel pots for melting snow to wash dishes. Heat this water on the wood stove when heating the Yurt. Cleaning is with a 3-bucket system utilizing the 3 bus tubs that are provided. Tub #1 gets soap, but very little as the cold dish soap will foam much more than expected! Tub #2 is for the first rinse. Tub #3 is for the final rinse and sanitizing as it gets a touch of bleach (1 tbl/gallon H₂O). Discard of the dishwater into the outhouse hole.

Food- plastic containers for storing food during your stay are provided, adjacent to the kitchen counter, so as to discourage rodents. Items that need to be kept cold can be stored in a separate container and stored on the floor away from the woodstove or outside (beware of freezing). These plastic containers may have spare food and yurt supplies already, but there should be plenty of room for your food. Feel free to leave left over food for later groups, however do not leave perishables as these simply rot.

Yurt Maintenance, page 2

Lighting- At both Yurts there are two propane lanterns provided. They use disposable canisters. Extras of these can be found under the bunk adjacent to the kitchen. Always light the match before turning on the gas when lighting the lanterns. The lantern handles get hot when the lanterns are hanging and burning, so use a hot pad when moving them. Be careful not to knock over the lanterns! A spare lantern is available in the Yurt Maintenance box under the bunk opposite the kitchen counter. A spare globe and mantles may be found in a plastic container to the left of the kitchen counter. Trujillo Meadows Yurt now has a solar system for operating lights inside the Yurt. The gadgetry for this set up can be found mounted on a piece of plywood between the southern bunk and the back window. At the top right corner of the plywood is a grey box with the on/off button for the power. Press this button to turn on the power. You will see lights come on the inverter and hear its fan. (You should turn on the inverter before turning on the overhead lights.) The lights each have their own switches. One is mounted on the wall at the kitchen window and the other is just south of the rear window. When using the solar power, you will hear the inverter fan intermittently. This is normal. You can turn off the system if you don't want to hear this noise at night. There is a rechargeable lantern which can be charged by plugging it into the inverter. It will only charge when the inverter is on. Please turn off the solar system before you leave!!

Urination- please do not pee off of the deck, or in random areas around the yurt! Either use the outhouse or on the far side of the outhouse beyond the path.

Garbage- garbage bags and a trash can are provided, but each group is expected to carry out their own garbage. Be sure to check the trash can before you go! Leaving a clean bag in the can is appreciated.

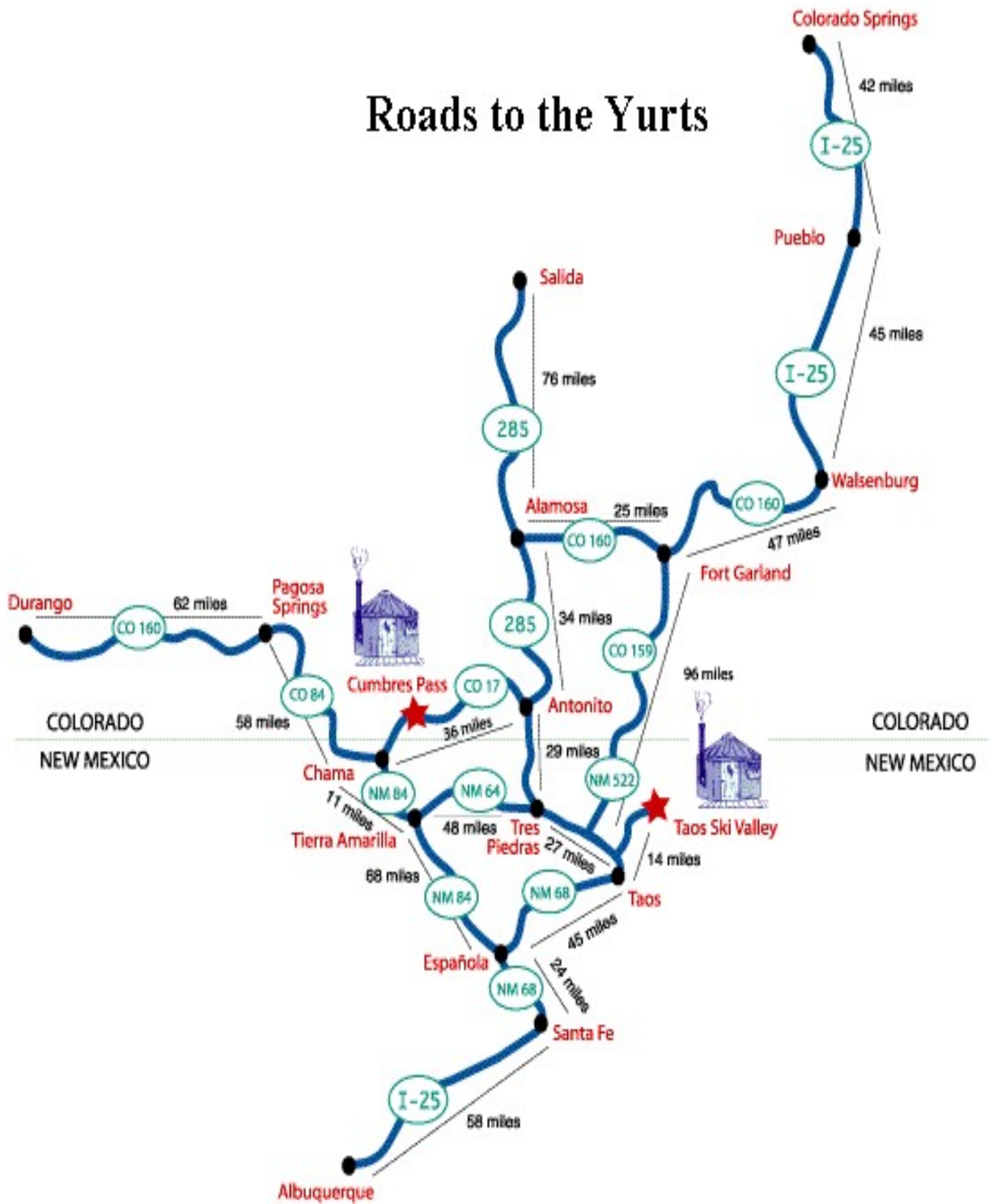
Yurt Safety- at each yurt follow the instructions printed on each appliance for safe operation. Operation manuals for the wood stove, gas cook stove, and lanterns may be found in a plastic container to the left of the kitchen counter. Please do not set candles directly on wood surfaces. Instead put them in a container to catch dripping wax and prevent toppling. There is a fire extinguisher attached to the end of the bunk adjacent to the kitchen counter. A first aid kit and maps may be found to the left of the kitchen counter in one of the plastic containers.

Leaving- check out time is 1 PM. You may stay later if the next group has not arrived yet, but the yurt should be ready for their arrival. Please leave the yurt as you found it: fresh piles of dry wood and kindling inside with the floor swept, dishes clean and put away.

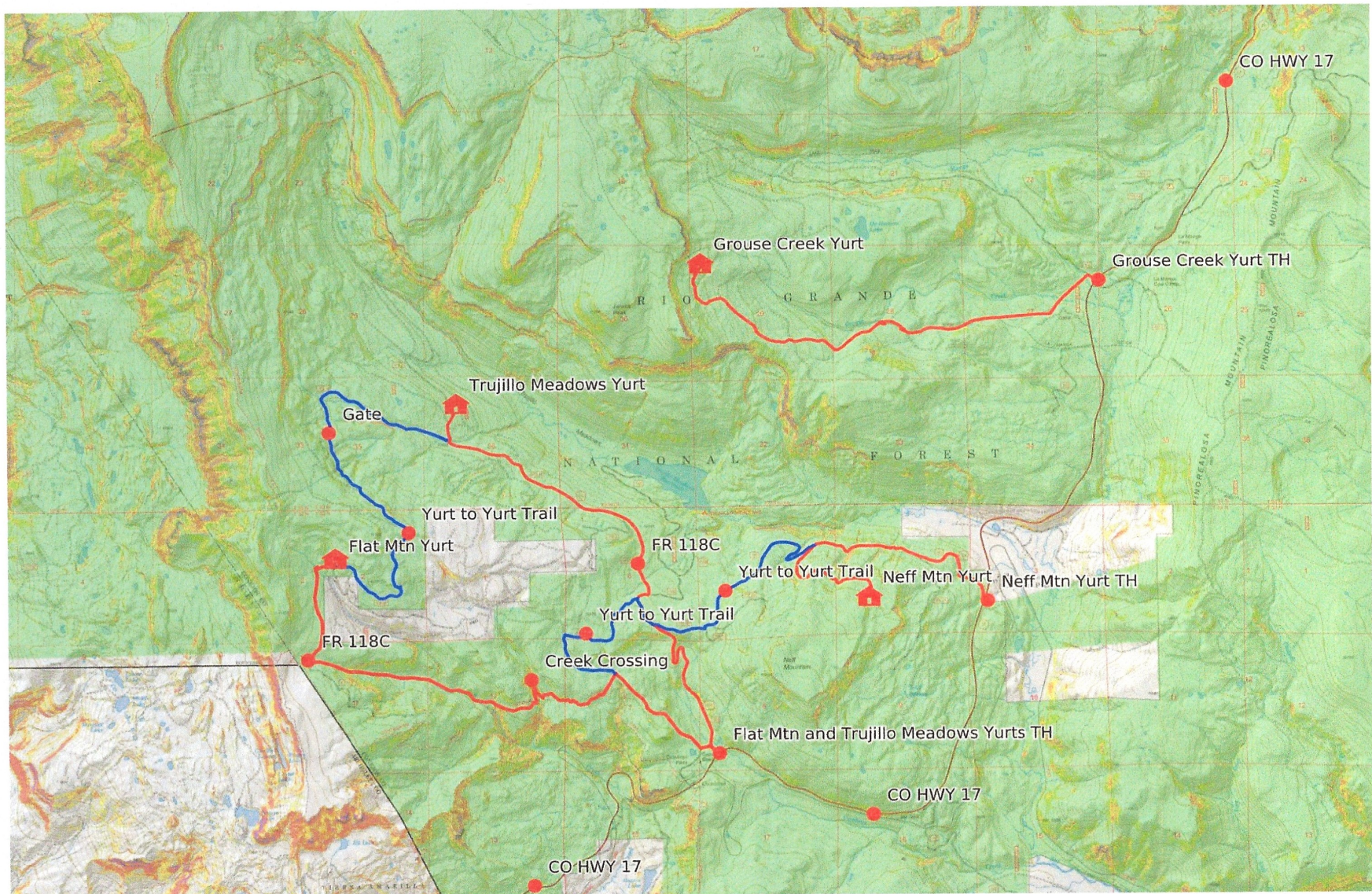
Safety-

The yurts are in the mountain backcountry. Travel in such a remote area can be hazardous. If you are using the yurts on an unguided basis, you are responsible for your own safety. Every group should be prepared for any emergency that may arise. Ski repair and first aid kits should be carried (lists available upon request). Skill with map and compass is required. Phone apps which show your location and the route are recommended. Get an early enough start to adapt to potentially variable conditions. Those wishing to ski steeper terrain should be aware of avalanche dangers. If you are in doubt about a slope's stability then don't ski it! In the event of an emergency call SNC at (575) 758-4761, and for a rescue call the Conejos County Sheriff at (719) 376-5921.

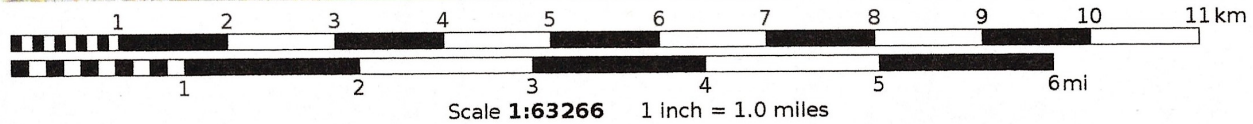
Roads to the Yurts



Cumbres Pass Yurts

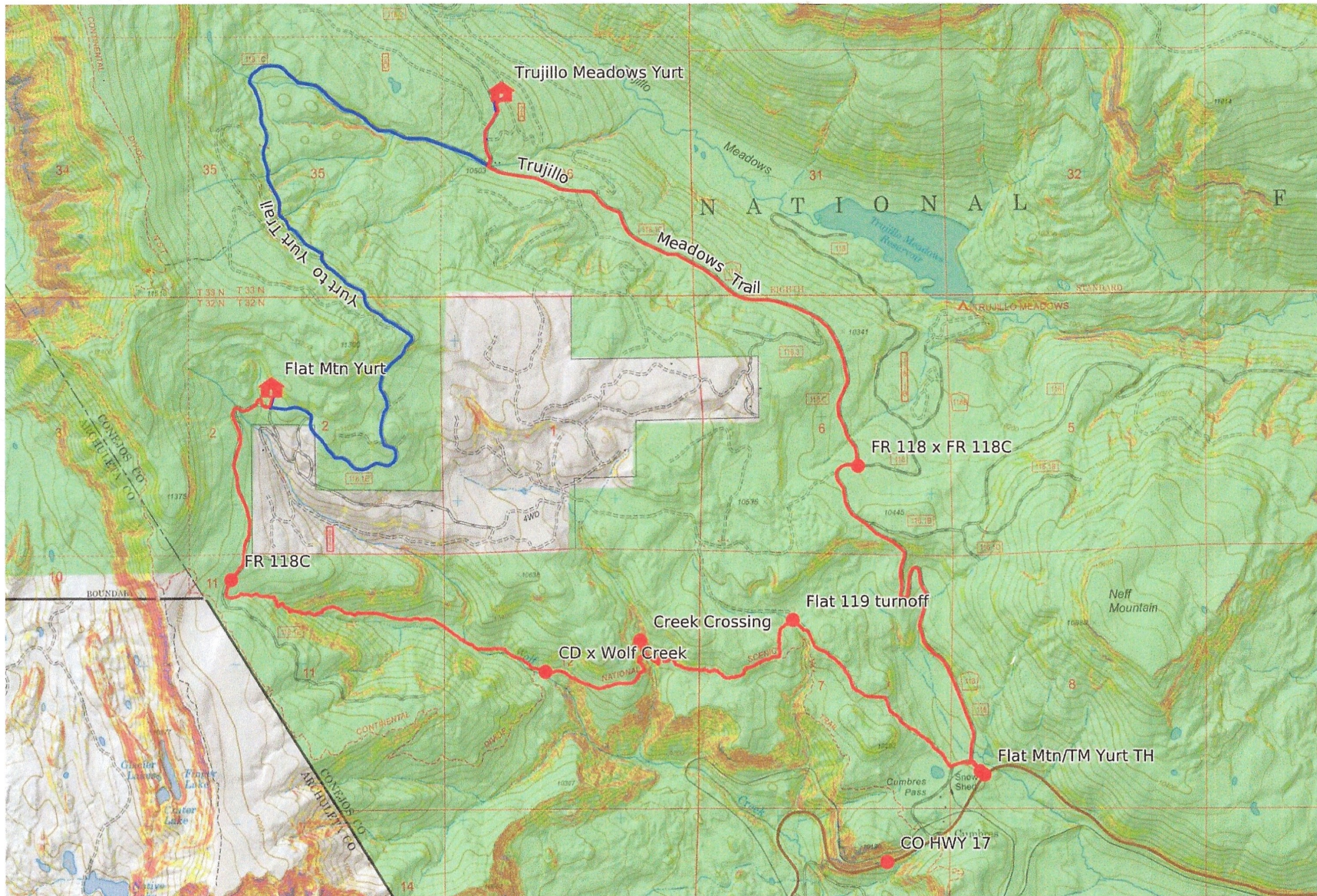


Mercator Projection
WGS84
UTM Zone 13S
CALTPOPO

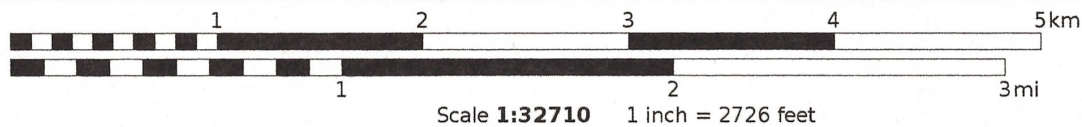


MN
8.1°

Trujillo Meadows Yurt to Flat Mtn Yurt



Mercator Projection
WGS84
UTM Zone 13S

Trujillo Meadows to Flat Mtn Yurt-

Trailhead: On Colorado 17, .2 miles north of Cumbres Pass or 7.2 miles south of La Manga Pass, at the junction with FR 118, the Trujillo Meadows Reservoir Road.

Parking: Excellent parking on the west side of Colorado 17 at the pull out for FR 118, or on the east side just south of this pull out. Be sure to park at least 10' from the highway (may be towed otherwise)! If the lot is not plowed you will have to shovel your way in.

Trailhead Elevation: 10,022'

Trailhead GPS: 37.01 304N; 106.26 810W

Yurt Elevations: Trujillo Meadows 10,400'; Flat Mtn 11,100'

Yurt GPS's: TM 37.06 005N; 106.48 101W; Flat Mtn 37.04 336N; 106.49 736W

Mileage to the Yurts: 4.1 to TM; 4.1 to Flat; 5.2 to CO 17

Maps: Cumbres Pass, CO 7.5 min. USGS quad; Archuleta Creek, CO 7.5 min. USGS; Rio Grande National Forest

Directions to the Trujillo Meadows Yurt- The trailhead is on Co. Highway 17 at Cumbres Pass. One begins at the pullout for Trujillo Meadows Reservoir, FR 118. The trail heads NNW up the right-hand side of the meadow following FR 118. There will not be many markers until you enter the trees near the far end of the meadow. The color of the blazes, for this trail, is blue. At 1.4 miles along FR 118 you will pass FR 116, Neff Mtn. Road, on your right. For .2 miles you will see both blue and yellow markers. The yellow markers will turn left leading towards the Flat Mtn. Yurt trail. About .1 miles after that turnoff, you will turn left, onto FR 118C, (GPS: N 37 02.344; W 106 27.341). Take great care to look for this turn and follow the blue markers as they leave FR 118. Follow FR 118C for 2.1 miles. At this point (GPS: N37 03.241; W 106 28.917) the blue markers will turn to the right onto the road to the Upper Los Pinos, while yellow markers will begin straight ahead indicating the route from Trujillo Meadows Yurt to Flat Mtn. Yurt. Follow the blue markers for about .2 miles where the trail bends to the left, then look for a turn down and to the right (GPS: N 37 03.559; W 106 26.810), which drops to the yurt just below.

Directions from Trujillo Meadows Yurt to Flat Mountain Yurt- Ski up to FR 118C and turn right following the yellow blazes. About 1 mile up this route you will come to Spruce Park where the trail turns 90 to the left for .2 miles then up to the right past a gate, if it's not buried (GPS: N 37 03.438; W 106 29.871). Follow this road for two miles to an open meadow with a view to the ridge. You will leave the road and go to the right. The yurt is at the tucked into the trees at the edge of this meadow. If you run into pink surveyor's tape then you have gone too far and will want to look for the markers that lead to the Yurt.

Directions from Flat Mtn Yurt to the Highway- You head south from the Yurt on FR 118C for 1.2 miles. Then turn east and head down the Wolf Creek drainage. You will want to follow the pink surveyor's tape. There will be a couple of places where the trail takes a sharp turn. Look for the markers to stay on track. After approximately $\frac{3}{4}$ mile the trail will break out into the open and be easier to follow. You continue downstream until you reach the CD trail. The CD trail will lead you out of the drainage heading back towards Cumbres Pass. You will want to look for where the trail leaves the CD trail and cuts over to FR 119. When you hit this road turn right and follow the blue markers back to the trailhead.