

Southwest Nordic Center  
PO Box 3212  
Taos, NM 87571  
(575) 758-4761  
yurt@newmex.com

### **Overnight What to Bring List**

Yurt Door Lock Combination  
Hiking boots  
Backpack  
Day Pack  
Sleeping Bag  
Warm Hat  
Sun Hat/Baseball cap  
Gloves  
Spare Socks  
Long Pants  
Shorts  
Shirt  
Warm Jacket  
Rain Jacket  
Rain Pants  
Wind Shell  
Sunglasses  
Sunblock  
Bug Repellant  
Map and Compass and/or GPS unit and/or Altimeter  
Phone- watch, route finding apps, music, camera all in one  
Camera and Film  
First Aid Kit  
Food and Water  
Water Bottle  
Booties or Hut Slippers  
Flashlight/headlamp  
Toilet Paper  
Toothbrush and Paste  
Soap- biodegradable only  
Yurt confirmation packet

Mountain travel in summer can range from hot and sunny to hailing and cold all in the same day. The above list takes this into account. The list is complete as to required items and includes some personal items also. You are welcome to bring other items as you choose. Remember: Even if the weather is sunny in town or at the trailhead you should still bring plenty of warm clothes and rain gear.

# What is at the Yurt

This list is intended to serve as a reference for what you can expect to find at the yurt. It does not represent an inventory of items but rather as assistance to guide your preparations.

## **Kitchen:**

The yurt comes equipped with a three-burner propane cook stove. There is a propane tank at the yurt. There is not an oven at the yurt. There are pots and pans, dishes, bowls, silverware, utensils, measuring cups and spoons, water glasses, coffee cups, wine glasses, melitta coffee filters and cone, thermos, hot pads, kitchen towels, paper towels, garbage bags, dish soap, scrubbies, spices, salt and pepper.

## **Lighting:**

The yurt comes with two propane lanterns that operate with disposable propane canisters, which are provided. A spare lantern, globe, and mantles are provided as well.

## **Sleeping:**

The yurt is set up to accommodate up to 6 persons. The arrangement is two bunk beds with two mattresses on each with two extra mattresses, which can be put on the floor when needed. There are 6 pillows/cases provided.

## **Warmth:**

The yurt comes equipped with an airtight woodstove, with a glass window for ambiance. Firewood is provided. There is newspaper and matches provided as well for fire starting. There are two throw rugs available to assist with comfort and ambiance. Sleeping bags and blankets are not provided.

## **Toilet:**

There is an outhouse for going to the bathroom. The toilet seat resides in the yurt so as to keep it warm for when needed. Toilet paper is provided. There is lime in the outhouse for spreading when finished.

## **Water:**

Water for dishes, cleaning, and fire dousing is being provided. It will need to be filtered or boiled to use as drinking water. It is in the 55 gallon blue drums near the yurt.

## **Games:**

There are some games provided at the yurt. It is attempted to have cards, cribbage, Jenga, Yahtzee, chess, checkers, and backgammon. Every season is rough on the game boxes but the contents should be there.

## **Table:**

There is a table and benches for eating and hanging around. The benches are not padded.

## **Accessories:**

There is a broom, mop and bucket, hatchet, axe, maul, snow shovel, and digging shovel. These will help with managing the snow around the yurt and keeping the yurt tidy inside. Please leave these in the Yurt when you leave.

The Southwest Nordic Center welcomes you to our yurt system. Great effort has gone into making our yurts warm and comfortable for your stay. Below are a number of items that will require your attention. Please follow the recommendations for handling of wastes so as to keep the environment safe for groups that will follow (it's worth the extra effort). Please be careful with fire at the yurts and enjoy your stay.

## **Yurt Maintenance-**

**Arriving-** Check-in time is 1 PM.

**Water-** for dishes, cleaning, and fire dousing is being provided. It will need to be filtered or boiled to use as drinking water. It is in the barrels outside the Yurt. You will need to bring your own water filter.

**Warmth-** an airtight wood stove has been installed for your comfort. Remove excess ashes from the stove before starting a fire. A metal container is kept behind the stove for this purpose. Empty the ashes into the outhouse hole. Paper is provided and kindling may be chopped on a stump on the deck. When stoking the fire, first rake the coals to the front of the stove before adding more wood. Do not leave the stove door open during burning and whenever you leave the yurt be sure that the stove door is secured. The damper is opened by pulling the gold knob out from the wood stove. Split wood to be burned is stacked inside next to the wood stove and on the wood deck at the south end of the yurt deck. There is a cover on the wood to keep it drier. It may help to dry the wood out more inside the yurt prior to needing it. If you have trouble getting a fire started then utilize smaller pieces in the stove until a blaze is created.

**Cooking-** the gas cook stove uses propane. To use the gas cook stove, you must first turn on the valve on the propane tank on the deck. Please do not overturn this valve! Second, turn on the valve next to the exterior regulator. Next turn on the valve located where the hose attaches to the stove inside the yurt. Please close the inside valve whenever the cook stove is not in use for extended periods i.e. overnight and during the day. Turn off both valves when you finish your visit. If you encounter an unsolvable problem with the cook stove there is a back-up two burner stove in the Yurt Maintenance box underneath the bunk opposite the kitchen. This stove uses the same propane cans as the lanterns. Put a hot pad under hot pots and pans when setting them on wood surfaces.

**Lighting-** there are two propane lanterns provided. They use disposable canisters. Extras of these can be found under the bunk adjacent to the kitchen. Always light the match before turning on the gas when lighting the lanterns. The lantern handles get hot when the lanterns are hanging and burning, so use a hot pad when moving them. Be careful not to knock over the lanterns! A spare lantern is available in the Yurt Maintenance box under the bunk opposite the kitchen counter. A spare globe and mantles may be found in a plastic container to the left of the kitchen counter.

**Fires-** There is a camp fire ring in front of the Yurt. This may be used when there are no fire restrictions. Have water ready to douse the fire if needed or when finished.

**Grazing-** Please be aware that the Yurts operate in an open grazing allotment so cows may be encountered.

## **Yurt Maintenance, page 2**

**Dishes-** there are two 5-gallon stainless steel pots for heating water to wash dishes. Cleaning is with a 3-bucket system utilizing the 3 bus tubs that are provided. Tub #1 gets soap, but very little as the cold dish soap will foam much more than expected! Tub #2 is for the first rinse. Tub #3 is for the final rinse and sanitizing as it gets a touch of bleach (1 tbl/gallon H<sub>2</sub>O). Discard of the dishwater into the outhouse hole.

**Garbage-** garbage bags and a trash can are provided, but each group is expected to carry out their own garbage. Be sure to check the trash can before you go! Leave a clean bag in the can when departing.

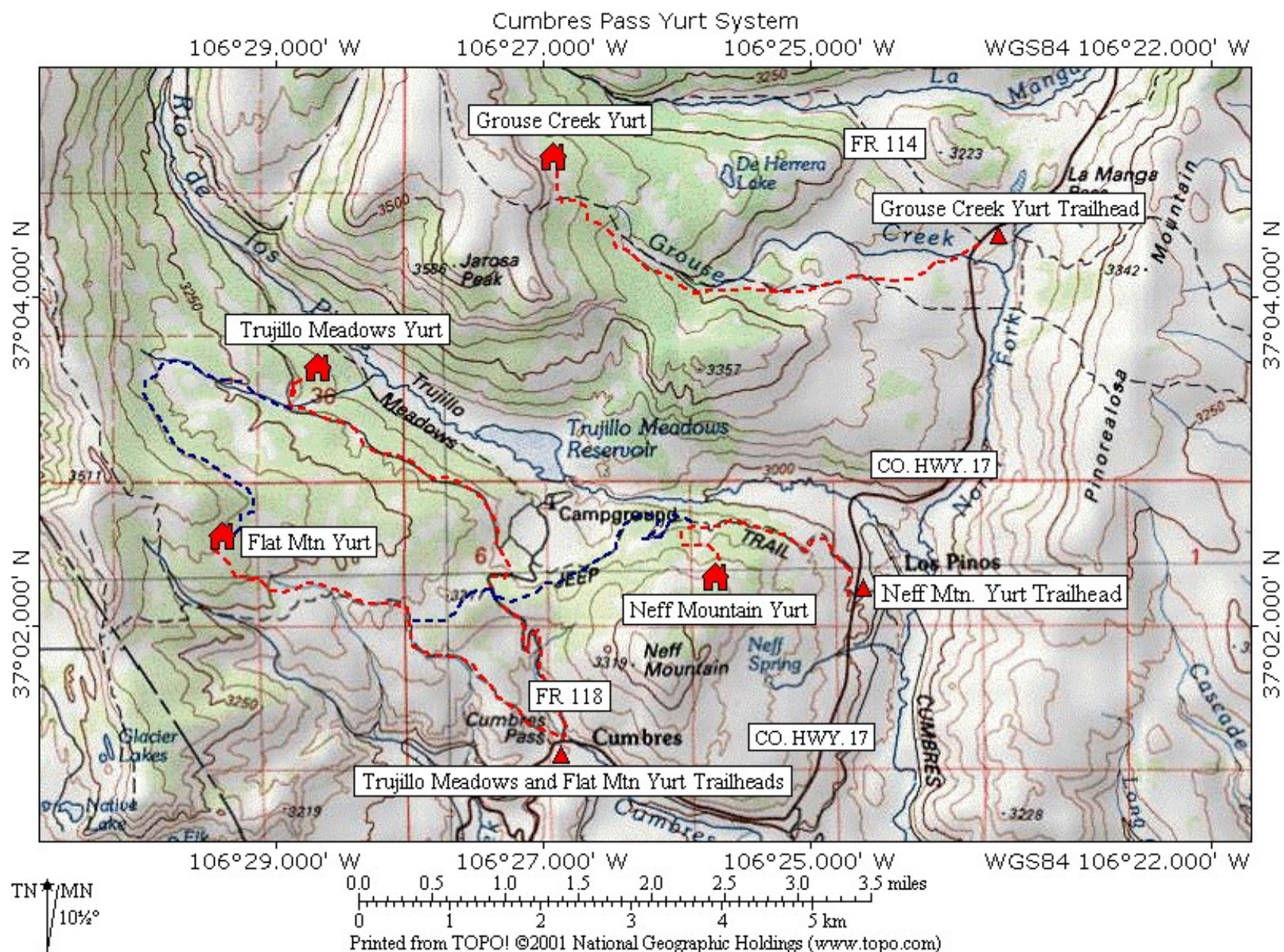
**Food-** plastic containers for storing food during your stay are provided, adjacent to the kitchen counter, so as to discourage rodents. These plastic containers may have spare food and yurt supplies already, but there should be plenty of room for your food. Feel free to leave left over food for later groups, however do not leave perishables as these simply rot. Be aware that there is no refrigeration at the yurt when planning your food menus. Do not leave food outside of the Yurt or your vehicle to discourage animals from coming near.

**Yurt Safety-** at each yurt follow the instructions printed on each appliance for safe operation. Operation manuals for the wood stove, gas cook stove, and lanterns may be found in a plastic container to the left of the kitchen counter. Please do not set candles directly on wood surfaces. Instead put them in a container to catch dripping wax and prevent toppling. There is a fire extinguisher attached to the end of the bunk adjacent to the kitchen counter. A first aid kit and maps may be found to the left of the kitchen counter in one of the plastic containers.

**Leaving-** check out time is 12 PM. You may stay later if the next group has not arrived yet, but the yurt should be ready for their arrival. Please leave the yurt as you found it: fresh piles of dry wood and kindling inside with the floor swept and dishes clean.

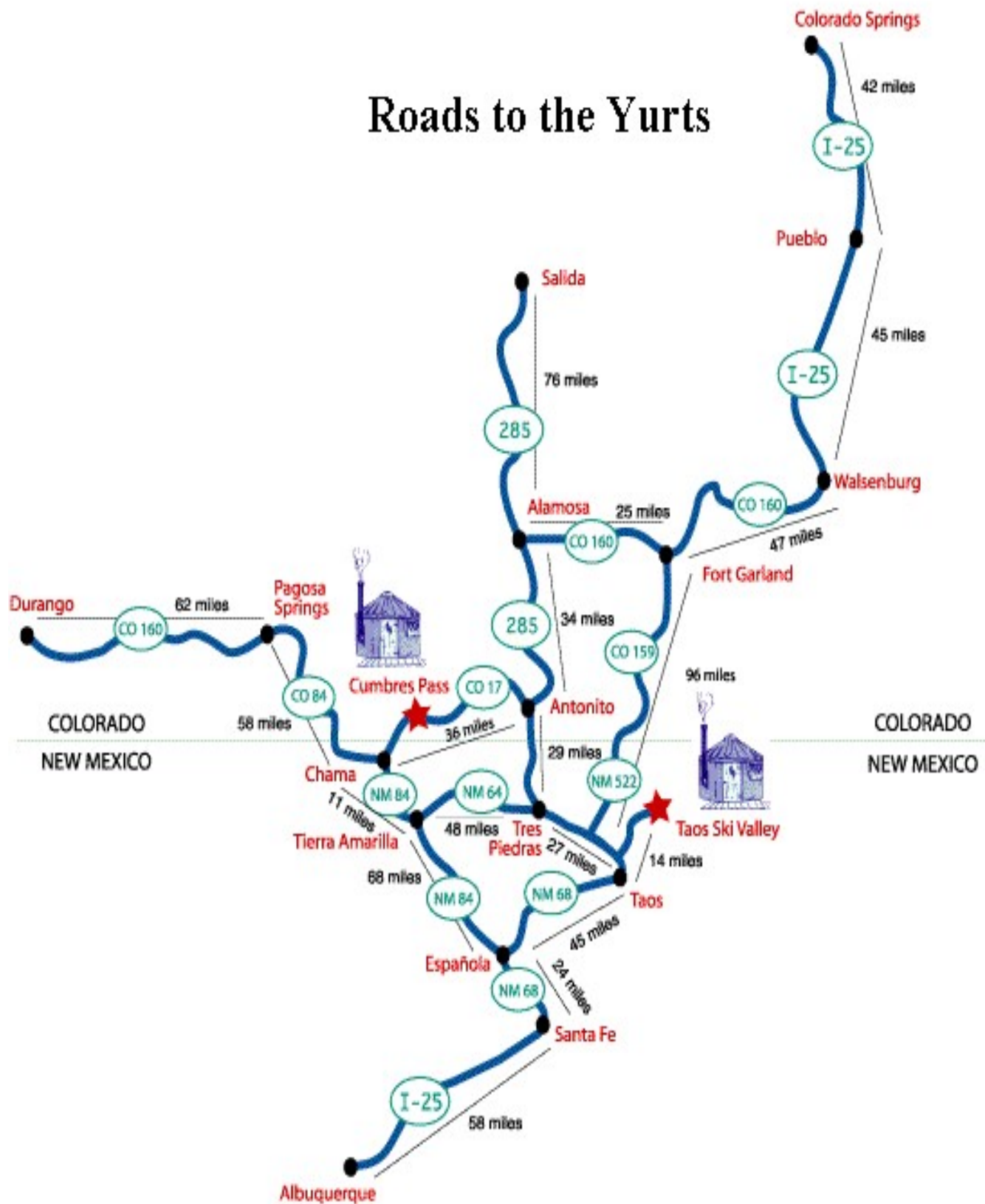
### **Safety-**

The yurts are in the mountain backcountry. Travel in such a remote area can be hazardous. If you are using the yurts on an unguided basis, you are responsible for your own safety. Skill with map and compass is required. Every group should be prepared for any emergency that may arise. It is now possible to purchase Search and Rescue assurance in the form of a CORSAR Card. The cost is \$3/year and \$12/five year. You may purchase it directly by calling (970) 248-7310. It provides funds for the rescuers if needed. In the event of an emergency call SNC at (575) 758-4761, and for a rescue call the Conejos County Sheriff at (719) 376-5921.





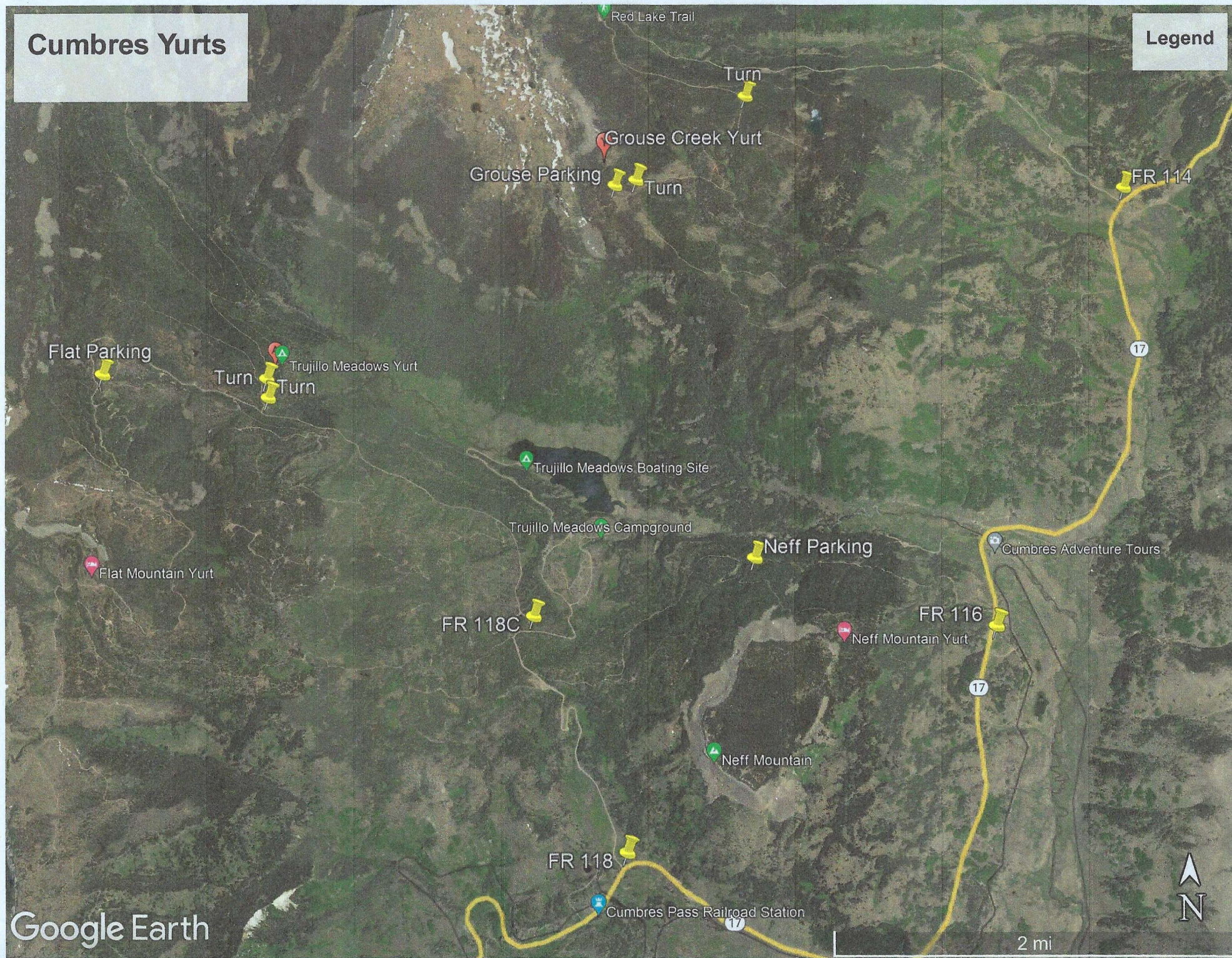
# Roads to the Yurts





# Cumbres Yurts

## Legend





## **Flat Mountain Yurt-**

**Trailhead:** At .2 miles north of Cumbres Pass on CO 17 turn onto FR 118. This is the road to the Trujillo Meadows Reservoir. At 1.7 miles turn left onto FR 118C. Follow this road until it dead ends at a gate at the far side of Spruce Park. This is where the yellow pin marked Flat Parking is on the map.

**Parking:** There are a couple of pull-outs and space at the corner of 118C below the gate. Feel free to use any of these. Do not block of the road, gate, or other users!

**Trailhead Elevation:** 10,845'

**Trailhead GPS:** 37°03'27.52"N; 106°29'51.56"W (from Google Earth)

**Yurt Elevation:** 11,100'

**Yurt GPS:** 37° 02' 36.42"N; 106° 29' 50.78"W (from Google Earth)

**Mileage to the Yurt:** 2.3 miles

**Maps:** Cumbres Pass, CO 7.5 min. USGS quad; Archuleta Creek, CO 7.5 min. USGS;  
Rio Grande National Forest

**Directions to the Flat Mountain Yurt-** The route to the Yurt follows the road past the gate for the next 2.3 miles. You should see yellow triangles marking the route left over from the winter Yurt to Yurt trail. The Yurt is tucked into the trees on the right at the top of an open meadow area. This will be the first time you get an unobstructed view of the south end of the back ridge. You can see the white of the Yurt cover at this point (to the right) if you look for it. The yellow markers will turn right here. There is a turn off at the bottom of the hill that goes directly to the Yurt. You should be able to see blue markers going left and right at this turn (from the Winter route) but you will need to be looking out for them. If you go past this there will not be any more markers.