

Here are the latest Co-vid adaptations for your visit:

(If you know that you have been exposed then do not use the Yurt)

Keeping the Yurts safe is our top priority!

We will be working vigilantly this winter to provide a sanitary and healthy space to enjoy. In order to accomplish this we will need your help.

The check-out time is 12 PM and check-in time 2:30 PM.

There is hand sanitizer, sanitizer spray, and bleach at the Yurt.

The rugs and kitchen towels have been removed.

We are asking folks to bring their own sheets to cover the mattresses and pillow cases.

This is in addition to using a sleeping bag.

The Cumbres Pass Yurts have 6 twin mattresses and 6 pillows.

The Bull of the Woods Yurt has 2 full/double futons, 6 twin mattresses, and 10 pillows.

You do not need to cover ones that you do not use.

Do not remove the sheets that are covering the mattresses or futons.

Please don't use the pillows or mattresses without covers.

As always please leave the Yurt as you found it: fresh piles of dry wood and kindling inside, the floor swept, dishes clean and put away, table and counter wiped with bleach water, and a new garbage bag in place.

Thank you for your cooperation!

Feel free to contact SNC if you have any questions or concerns.

SNC contact info:

Phone number: 575-758-4761; e-mail: yurt@newmex.com

Southwest Nordic Center
PO Box 3212
Taos, NM 87571
(575) 758-4761
yurt@newmex.com

Overnight What to Bring List

Skis or snowshoes, boots, and poles
Waxes or Maxiglide
Backpack- preferably an internal frame
Sleeping Bag- as warm as you have
Warm Hat- one that covers your ears
Mittens and/or Gloves- mittens are warmer
Wool Socks
Scarf or neck gaiter
Long Underwear- both top and bottoms
Pants- No jeans. Wool, thinsulate, pile, or polypropylene are fine
Shirt
Sweater
Vest
Jacket- insulated
Wind and/or Waterproof Shell- both top and bottom
Gaiters
Sunglasses
Sunblock
Day Pack
Map and Compass
Phone- watch, route finding apps, camera all in one
First Aid Kit
Ski Repair Kit
Climbing Skins
Avalanche transceiver if looking for steep turns
Shovel- one big enough to dig in or out your car as well as one for skiing/boarding
Food
Water
Booties or Hut Slippers
Head lamp or flashlight
Toilet Paper- this is at the Yurt also
Toothbrush and Paste
Soap- biodegradable only

The way to dress for cross-country skiing is to wear layers. This will enable you to stay warm without getting too hot or cold. The above list takes this into account. The list is complete as to required items and includes some personal items also. You are welcome to bring other items as you choose. Remember: Even if the weather is sunny in town or at the trailhead you should still bring plenty of warm clothes.

What is at the Yurt

This list is intended to serve as a reference for what you can expect to find at the yurt. It does not represent an inventory of items but rather as assistance to guide your preparations.

Kitchen:

The yurt comes equipped with a three-burner propane cook stove. There is a propane tank at the yurt. There is not an oven at the yurt. There are pots and pans, silverware, utensils, measuring cups and spoons, water glasses, coffee cups, wine glasses, melitta coffee filters and cone, thermos, hot pads, kitchen towels, paper towels, garbage bags, dish soap, scrubbies, spices, salt and pepper.

Lighting:

The yurt comes with two propane lanterns that operate with disposable propane canisters, which are provided. A spare lantern, globe, and mantles are provided as well.

Sleeping:

The yurt is set up to accommodate up to 6 persons. The arrangement is two bunk beds with two mattresses on each with two extra mattresses, which can be put on the floor when needed. There are 6 pillows/cases provided.

Warmth:

The yurt comes equipped with an airtight woodstove, with a glass window for ambiance. Firewood is provided. There is newspaper and matches provided as well for fire starting. There are two throw rugs available to assist with comfort and ambiance. Sleeping bags and blankets are not provided.

Toilet:

There is an outhouse for going to the bathroom. The toilet seat resides in the yurt so as to keep it warm for when needed. Toilet paper is provided. There is lime in the outhouse for spreading when finished.

Water:

Water is by snowmelt. There are 2 large pots, which live on the woodstove for melting snow for cooking, drinking, and doing dishes. There are other large pots for collecting snow. It is recommended that all drinking water be boiled. It is easy to cool down by putting covered pots outside.

Games:

There are some games provided at the yurt. It is attempted to have cards, cribbage, Jenga, Yahtzee, chess, checkers, and backgammon. Every season is rough on the game boxes but the contents should be there.

Table:

There is a table and benches for eating and hanging around. The benches are not padded.

Accessories:

There is a broom, mop and bucket, hatchet, axe, maul, snow shovel, and digging shovel. These will help with managing the snow around the yurt and keeping the yurt tidy inside.

The Southwest Nordic Center welcomes you to our yurt system. Great effort has gone into making our yurts warm and comfortable for your stay. Below are a number of items that will require your attention. Please follow the recommendations for handling of wastes so as to keep the environment safe for groups that will follow (it's worth the extra effort). Please be careful with fire at the yurts and enjoy your stay.

Yurt Maintenance-

Arriving- please use the shovel and/or broom to clear any snow off the deck and stairs. Take care not to dig into the deck when chipping ice. You will want to clear a path to the outhouse, and then clear any snow from its roof. A decent path to the outhouse will make using it easier. You will also want to clear as much snow as possible from the roof of the yurt, especially over the door so as to assure its free movement. Please be careful not to tear the roof in the process. Please do not break the snow shovel. We all know that you are stronger than it is.

Water- supply is by snowmelt, so **No Dogs** at the yurt. Snow may be collected anywhere in the vicinity of the yurt. Care should be taken to select only clean, pure snow. The snow may be melted in the large pot on the wood stove. Take care not to burn the snow when melting or there will be an off taste to the water. It is recommended to boil water to purify it.

Warmth- an airtight wood stove has been installed for your comfort. Remove excess ashes from the stove before starting a fire. A metal container is kept behind the stove for this purpose. Empty the ashes into the outhouse hole. Paper is provided and kindling may be chopped on a stump on the deck. When stoking the fire, first rake the coals to the front of the stove before adding more wood. Do not leave the stove door open during burning and whenever you leave the yurt be sure that the stove is turned down completely. The damper is opened by pulling the gold knob out from the wood stove. Split wood to be burned is stacked inside next to the wood stove and on the wood deck at the south end of the yurt deck. There is a cover on the wood to keep it drier. It may help to dry the wood out more inside the yurt prior to needing it. If you have trouble getting a fire started then utilize smaller pieces in the stove until a blaze is created.

Cooking- the gas cook stove uses propane. To use the gas cook stove you must first turn on the valve on the propane tank on the deck. Please do not overturn this valve! Next turn on the valve located where the hose attaches to the stove's regulator inside the yurt. Please close the inside valve whenever the cook stove is not in use for extended periods i.e. overnight and during the day. Turn off both valves when you finish your visit. If you encounter an unsolvable problem with the cook stove there is a back-up two burner stove in the Yurt Maintenance box underneath the bunk opposite the kitchen. This stove uses the same propane cans as the lanterns. Put a hot pad under hot pots and pans when setting them on wood surfaces.

Lighting- there are two propane lanterns provided. They use disposable canisters. Extras of these can be found under the bunk adjacent to the kitchen. Always light the match before turning on the gas when lighting the lanterns. The lantern handles get hot when the lanterns are hanging and burning, so use a hot pad when moving them. Be careful not to knock over the lanterns! A spare lantern is available in the Yurt Maintenance box under the bunk opposite the kitchen counter. A spare globe and mantles may be found in a plastic container to the left of the kitchen counter.

the bunk opposite the kitchen counter. A spare globe and mantles may be found in a plastic container to the left of the kitchen counter.

Yurt Maintenance, page 2

Dishes- there are two 5-gallon stainless steel pots for melting snow to wash dishes. Cleaning is with a 3-bucket system utilizing the 3 bus tubs that are provided. Tub #1 gets soap, but very little as the cold dish soap will foam much more than expected! Tub #2 is for the first rinse. Tub #3 is for the final rinse and sanitizing as it gets a touch of bleach (1 tbl/gallon H₂O). Discard of the dishwater into the outhouse hole.

Urination- please do not pee off of the deck, or in random areas around the yurt! Either use the outhouse or on the far side of the outhouse beyond the path.

Garbage- garbage bags and a trash can are provided, but each group is expected to carry out their own garbage. Be sure to check the trash can before you go! Leaving a clean bag in the can is fine if it is empty.

Food- plastic containers for storing food during your stay are provided, adjacent to the kitchen counter, so as to discourage rodents. Items that need to be kept cold can be stored in a separate container and stored on the floor away from the woodstove or outside (beware of freezing). These plastic containers may have spare food and yurt supplies already, but there should be plenty of room for your food. Feel free to leave left over food for later groups, however do not leave perishables as these simply rot.

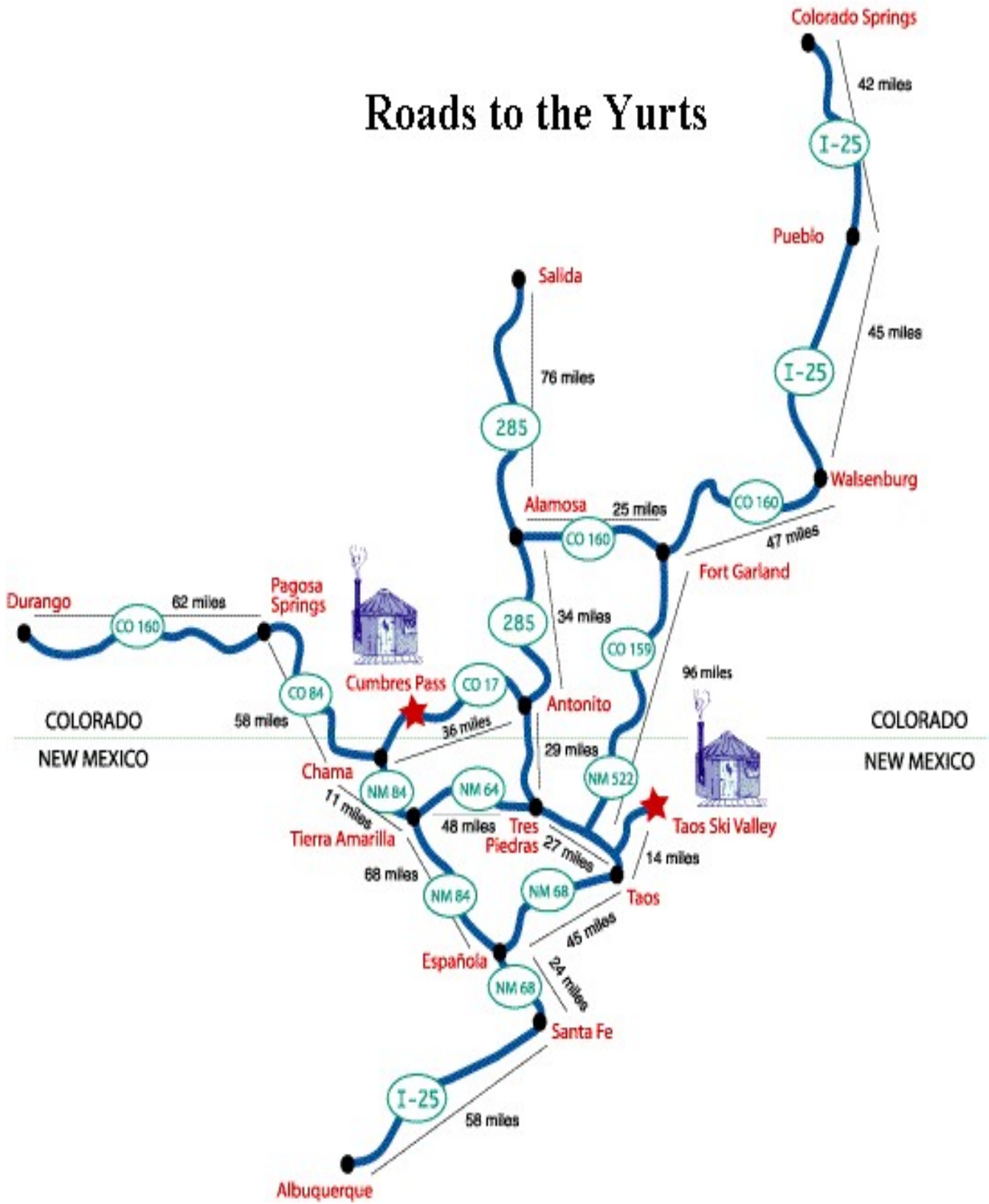
Yurt Safety- at each yurt follow the instructions printed on each appliance for safe operation. Operation manuals for the wood stove, gas cook stove, and lanterns may be found in a plastic container to the left of the kitchen counter. Please do not set candles directly on wood surfaces. Instead put them in a container to catch dripping wax and prevent toppling. There is a fire extinguisher attached to the end of the bunk adjacent to the kitchen counter. A first aid kit and maps may be found to the left of the kitchen counter in one of the plastic containers.

Leaving- check out time is 1 PM. You may stay later if the next group has not arrived yet, but the yurt should be ready for their arrival. Please leave the yurt as you found it: fresh piles of dry wood and kindling inside with the floor swept and dishes clean.

Safety-

The yurts are in the mountain backcountry. Travel in such a remote area can be hazardous. If you are using the yurts on an unguided basis you are responsible for your own safety. Every group should be prepared for any emergency that may arise. Ski repair and first aid kits should be carried (lists available upon request). Skill with map and compass is required. Those wishing to ski steeper terrain should be aware of avalanche dangers. If you are in doubt about a slope's stability then don't ski it! In the event of an emergency call SNC at (575) 758-4761, and for a rescue call the Conejos County Sheriff at (719) 376-5921.

Roads to the Yurts



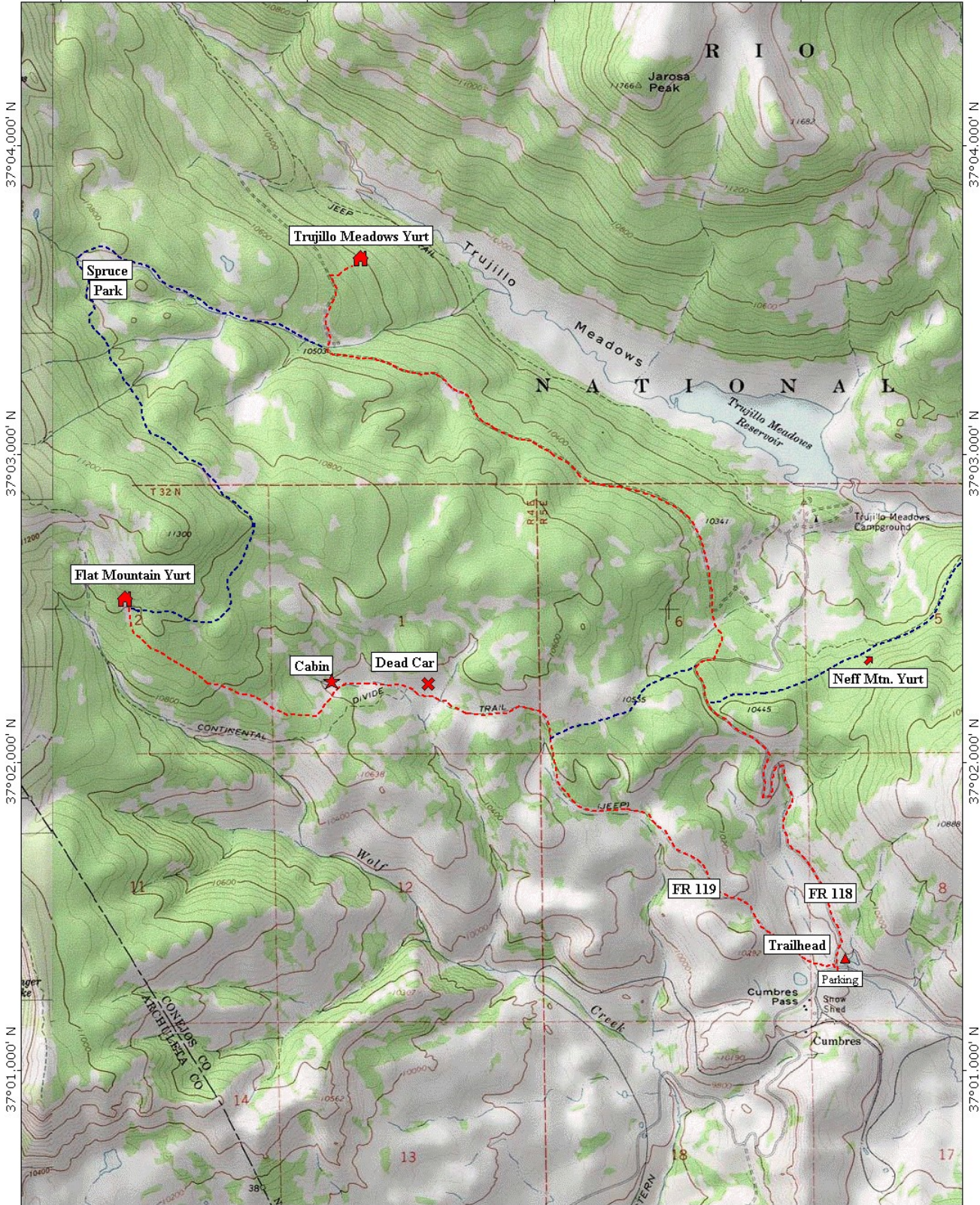
Trujillo Meadows and Flat Mountain Yurts

106°30.000' W

106°29.000' W

106°28.000' W

WGS84 106°27.000' W



106°30.000' W

106°29.000' W

106°28.000' W

WGS84 106°27.000' W



Flat Mountain Yurt-

Trailhead: On Colorado 17, 2 miles north of Cumbres Pass or 7.2 miles south of La Manga Pass, at the junction with FR 118, the Trujillo Meadows Reservoir Road.

Parking: Excellent parking on the west side of Colorado 17 at the pull out for FR 118, or on the east side just south of this pull out. Be sure to park at least 10' from the highway (may be towed otherwise)! If the lot is not plowed you will have to shovel your way in.

Trailhead Elevation: 10,022

Yurt Elevation: 11,100'

Yurt GPS: 37 02 607N; 106 29 846W

Mileage to the Yurt: 3.94 miles

Maps: Cumbres Pass, CO 7.5 min. USGS quad; Archuleta Creek, CO 7.5 min. USGS
Rio Grande National Forest

Directions to the Flat Mountain Yurt- The trailhead is on Co. Highway 17 at Cumbres Pass, 14.2 miles north of Chama, NM. One begins at the pullout for Trujillo Meadows Reservoir, FR 118. Do not follow FR 118. The trail to follow heads northwest, first on FR 119 which later becomes trail 813 and then diverges to follow the north ridge of the Wolf Creek drainage to the yurt. With your back to the highway look to the left towards the trees for the large orange sign which indicates the beginning of the route. You will follow the orange trail blazes to the Flat Mtn. yurt. After skiing about 2.25 miles you will come to a large open meadow area. You will want to pay particular attention here as there is little to place markers on. You ski WNW across the meadow passing an old abandoned car (if it's not buried) and going past the private land fence. Look for orange markers hanging on the trees to lead you into more open meadow. You will ski below a cabin staying to the left following the orange markers which will now lead you to the SSW. The trail will reenter the woods and continue in a WNW direction to the yurt. The rest of the route should be easy to follow if you keep an eye out for the orange trail markers. You will ski below a second cabin when you are about 1/3 of a mile from the yurt. After a short downhill to a right turn there will be a short straight away to a climb to your right that will lead you up into an open meadow. The yurt is at the far end of the meadow tucked into the trees.

Directions from Flat Mountain Yurt to Trujillo Meadows Yurt- This yurt to yurt trail is four miles. It is marked with yellow markers. From Flat Mtn. Yurt ski to the top of the open meadow in front of the yurt heading north. There you will catch a forest road leading into the woods to the north. After 2.3 miles you will come out to the Spruce Park area. Go around the large open meadow to the north side continuing along the forest road heading southeast away from the meadow looking out for the yellow markers. About a mile further there will be a left turn with blue markers leading the last quarter mile to the Trujillo Meadows Yurt. Follow the blue markers for about .2 miles where the trail bends to the left, then look for a turn down and to the right which drops to the yurt just below.

Trujillo Meadows Yurt-

Trailhead: On Colorado 17, 2 miles north of Cumbres Pass or 7.2 miles south of La Manga Pass, at the junction with FR 118, the Trujillo Meadows Reservoir Road.

Parking: Excellent parking on the west side of Colorado 17 at the pull out for FR 118, or on the east side just south of this pull out.

Trailhead Elevation: 10,022

Yurt Elevation: 10,500'

Yurt GPS: 37 03 602N; 106 28 873W

Mileage to the Yurt: 4 miles

Maps: Cumbres Pass, CO 7.5 min. USGS quad;
Rio Grande National Forest

Directions from Trujillo Meadows Yurt to the Trailhead- Ski back up the hill to the junction with the forest road (118C) that you came in from Flat Mtn. Yurt. You will turn left onto this road away from Flat Mtn Yurt following the blue trail markers. You will go 2.1 miles along this road to a tee. Turn right at the tee onto a major forest road, FR 118, and follow this back to the trailhead at Co Hwy 17.