

Here are the latest Co-vid adaptations for your visit:

(If you know that you have been exposed then do not use the Yurt)

Keeping the Yurts safe is our top priority!

We will be working vigilantly this winter to provide a sanitary and healthy space to enjoy. In order to accomplish this we will need your help.

The check-out time is 12 PM and check-in time 2:30 PM.

There is hand sanitizer, sanitizer spray, and bleach at the Yurt.

The rugs and kitchen towels have been removed.

We are asking folks to bring their own sheets to cover the mattresses and pillow cases.

This is in addition to using a sleeping bag.

The Cumbres Pass Yurts have 6 twin mattresses and 6 pillows.

The Bull of the Woods Yurt has 2 full/double futons, 6 twin mattresses, and 10 pillows.

You do not need to cover ones that you do not use.

Do not remove the sheets that are covering the mattresses or futons.

Please don't use the pillows or mattresses without covers.

As always please leave the Yurt as you found it: fresh piles of dry wood and kindling inside, the floor swept, dishes clean and put away, table and counter wiped with bleach water, and a new garbage bag in place.

Thank you for your cooperation!

Feel free to contact SNC if you have any questions or concerns.

SNC contact info:

Phone number: 575-758-4761; e-mail: yurt@newmex.com

Southwest Nordic Center
PO Box 3212
Taos, NM 87571
(575) 758-4761
yurt@newmex.com

Overnight What to Bring List

Skis, boots, and poles
Waxes or Maxiglide
Backpack- preferably an internal frame
Sleeping Bag- as warm as you have
Warm Hat- one that covers your ears
Mittens and/or Gloves- mittens are warmer
Wool Socks
Sock Liners- silk or polypropylene
Scarf
Long Underwear- both top and bottoms
Pants or Knickers- No jeans. Wool, thinsulate, pile, or
polypropylene are fine
Shirt
Sweater
Vest
Jacket- insulated
Windshell- both top and bottom
Gaiters
Sunglasses
Sunblock
Day Pack
Map and Compass
First Aid Kit
Ski Repair Kit
Climbing Skins
Food
Water
Camera and Film
Booties or Hut Slippers
Head lamp or flashlight
Toilet Paper
Toothbrush and Paste
Soap- biodegradable only
Shovel at the vehicle in case you need to dig out

The way to dress for cross-country skiing is to wear layers. This will enable you to stay warm without getting too hot or cold. The above list takes this into account. The list is complete as to required items and includes some personal items also. You are welcome to bring other items as you choose. Remember: Even if the weather is sunny in town or at the trailhead you should still bring plenty of warm clothes.

The Southwest Nordic Center welcomes you to our yurt system. Great effort has gone into making our yurts warm and comfortable for your stay. Below are a number of items that will require your attention. Please follow the recommendations for handling of wastes so as to keep the environment safe for groups that will follow (it's worth the extra effort). Please be careful with fire at the yurts and enjoy your stay.

Yurt Maintenance-

Arriving- please use the shovel and/or broom to clear any snow off the deck and stairs. Take care not to dig into the deck when chipping ice. You will want to clear a path to the outhouse, and then clear any snow from its roof. A decent path to the outhouse will make using it easier. You will also want to clear as much snow as possible from the roof of the yurt, especially over the door so as to assure its free movement. Please be careful not to tear the roof in the process.

Water- supply is by snowmelt, so **No Dogs** at the yurt. Snow may be collected anywhere in the vicinity of the yurt. Care should be taken to select only clean, pure snow. The snow may be melted in the large pot on the wood stove. Take care not to burn the snow when melting or there will be an off taste to the water. It is recommended to boil water to purify it.

Warmth- an airtight wood stove has been installed for your comfort. Remove excess ashes from the stove before starting a fire. A metal container is kept behind the stove for this purpose. Empty the ashes into the outhouse hole. Paper is provided and kindling may be chopped on a stump on the deck. When stoking the fire, first rake the coals to the front of the stove before adding more wood. Do not leave the stove door open during burning and whenever you leave the yurt be sure that the stove is turned down completely. The damper is opened by pulling the gold knob out from the wood stove. Split wood to be burned is stacked inside next to the wood stove and on a wood deck to the south of the yurt deck. It helps to dry the wood out inside the yurt prior to needing it. If moisture persists then utilize smaller pieces in the stove.

Cooking- the gas cook stove uses propane. To use the gas cook stove you must first turn on the valve on the propane tank on the deck. Please do not overturn this valve! Next turn on the valve located where the hose attaches to the stove's regulator inside the yurt. Please close the inside valve whenever the cook stove is not in use for extended periods i.e. overnight and during the day. Turn off both valves when you finish your visit. If you encounter an unsolvable problem with the cook stove there is a back-up two burner stove in the Yurt Maintenance box underneath the bunk opposite the kitchen. This stove uses the same propane cans as the lanterns. Put a hot pad under hot pots and pans when setting them on wood surfaces.

Lighting- there are two propane lanterns provided. They use disposable canisters. Extras of these can be found under the bunk adjacent to the kitchen. Always light the match before turning on the gas when lighting the lanterns. The lantern handles get hot when the lanterns are hanging and burning, so use a hot pad when moving them. Be careful not to knock over the lanterns! A spare lantern is available in the Yurt Maintenance box under the bunk opposite the kitchen counter. A spare globe and mantles may be found in a plastic container to the left of the kitchen counter.

Yurt Maintenance, page 2

Dishes- there are two 5-gallon stainless steel pots for melting snow to wash dishes. Cleaning is with a 3-bucket system utilizing the 3 bus tubs that are provided. Tub #1 gets soap, but very little as the cold dish soap will foam much more than expected! Tub #2 is for the first rinse. Tub #3 is for the final rinse and sanitizing as it gets a touch of bleach (1 tbl/gallon H₂O). Discard of the dishwater into the outhouse hole.

Urination- please do not pee off of the deck, or in random areas around the yurt! Either use the outhouse or on the far side of the outhouse beyond the path.

Garbage- garbage bags and a trash can are provided, but each group is expected to carry out their own garbage. Be sure to check the trash can before you go! Leaving a clean bag in the can is fine if it is empty.

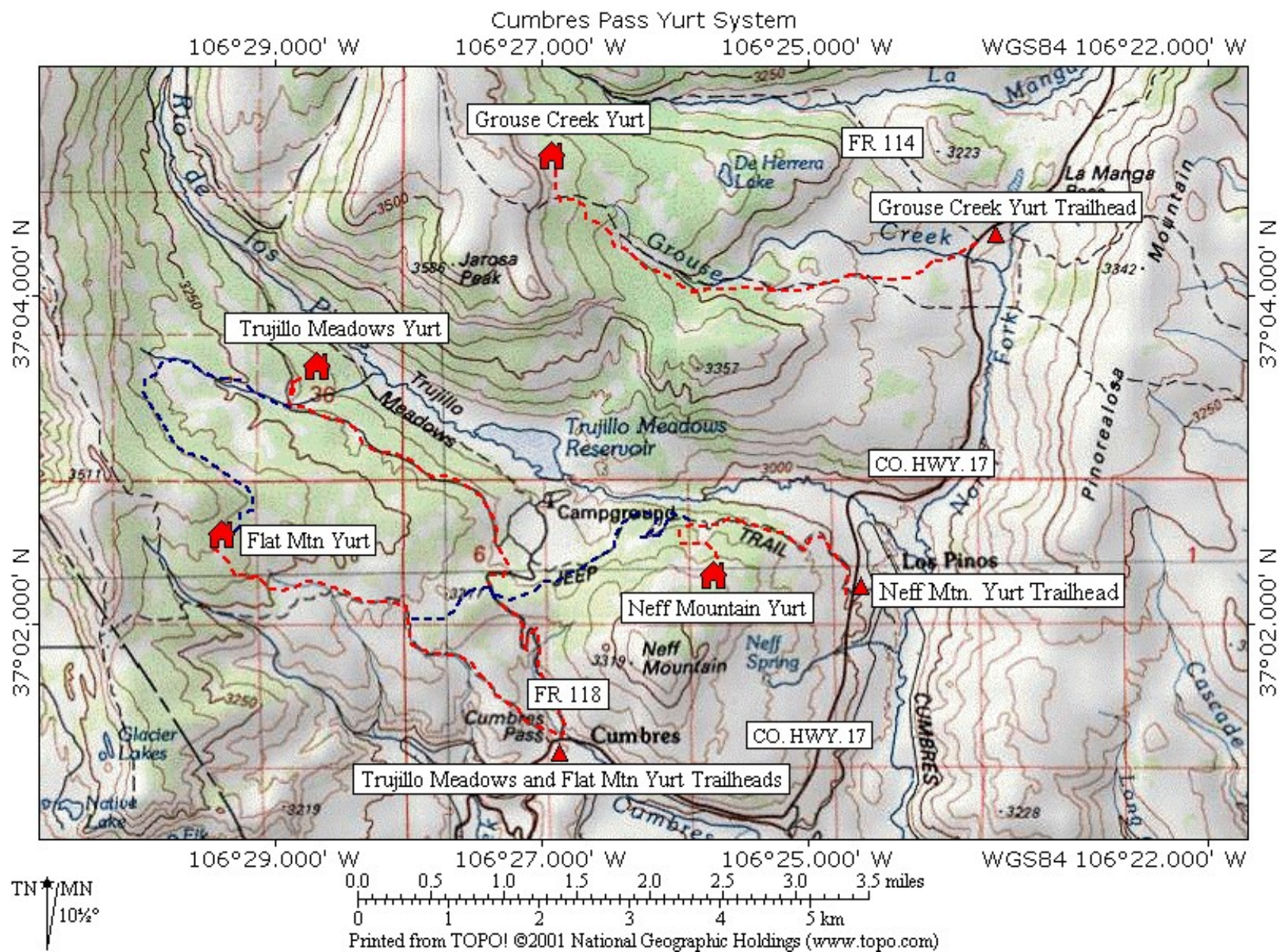
Food- plastic containers for storing food during your stay are provided, adjacent to the kitchen counter, so as to discourage rodents. Items that need to be kept cold can be stored in a separate container and stored on the floor away from the woodstove or outside (beware of freezing). These plastic containers may have spare food and yurt supplies already, but there should be plenty of room for your food. Feel free to leave left over food for later groups, however do not leave perishables as these simply rot.

Yurt Safety- at each yurt follow the instructions printed on each appliance for safe operation. Operation manuals for the wood stove, gas cook stove, and lanterns may be found in a plastic container to the left of the kitchen counter. Please do not set candles directly on wood surfaces. Instead put them in a container to catch dripping wax and prevent toppling. There is a fire extinguisher attached to the end of the bunk adjacent to the kitchen counter. A first aid kit and maps may be found to the left of the kitchen counter in one of the plastic containers.

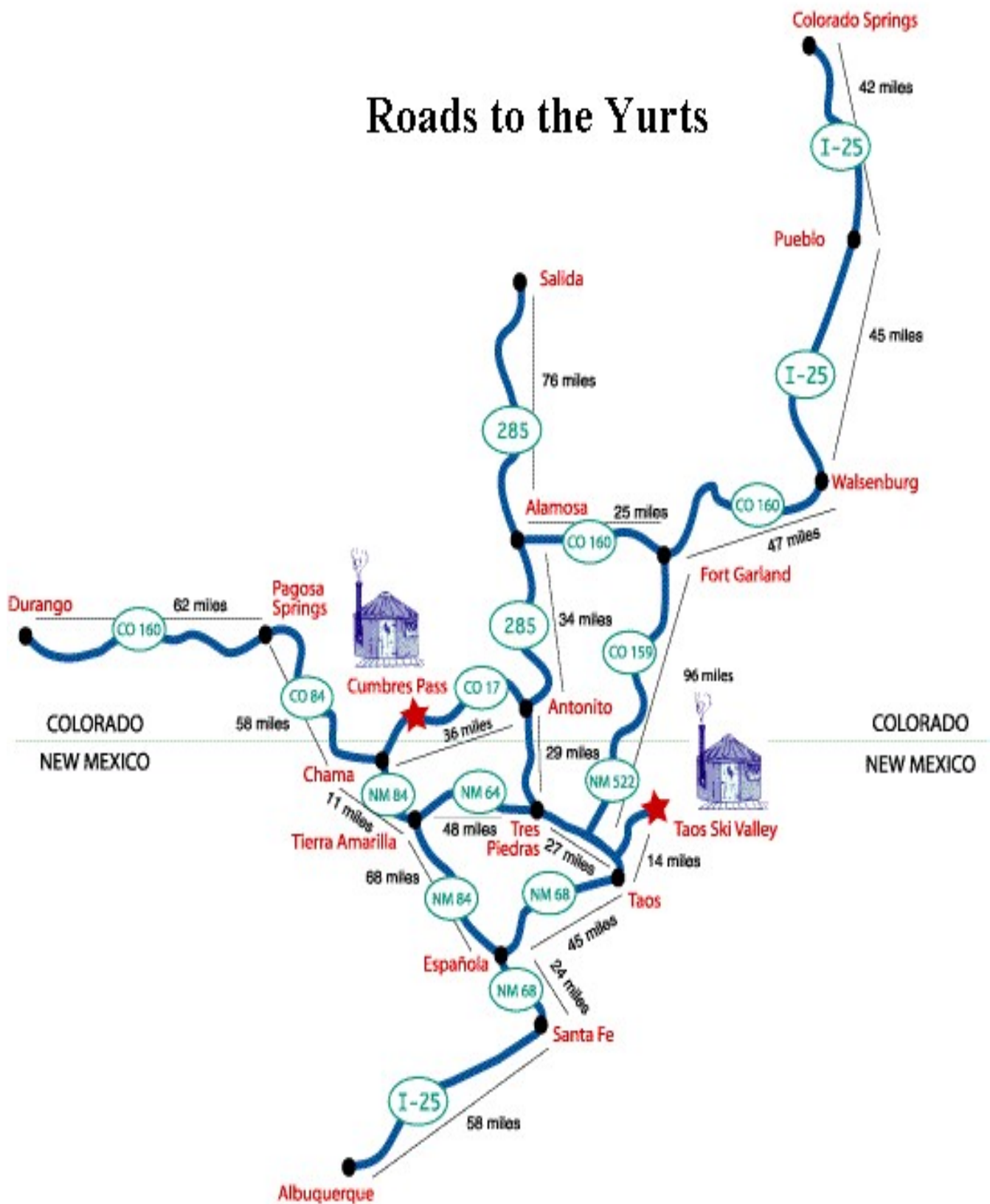
Leaving- check out time is 1 PM. You may stay later if the next group has not arrived yet, but the yurt should be ready for their arrival. Please leave the yurt as you found it: fresh piles of dry wood and kindling inside with the floor swept and dishes clean.

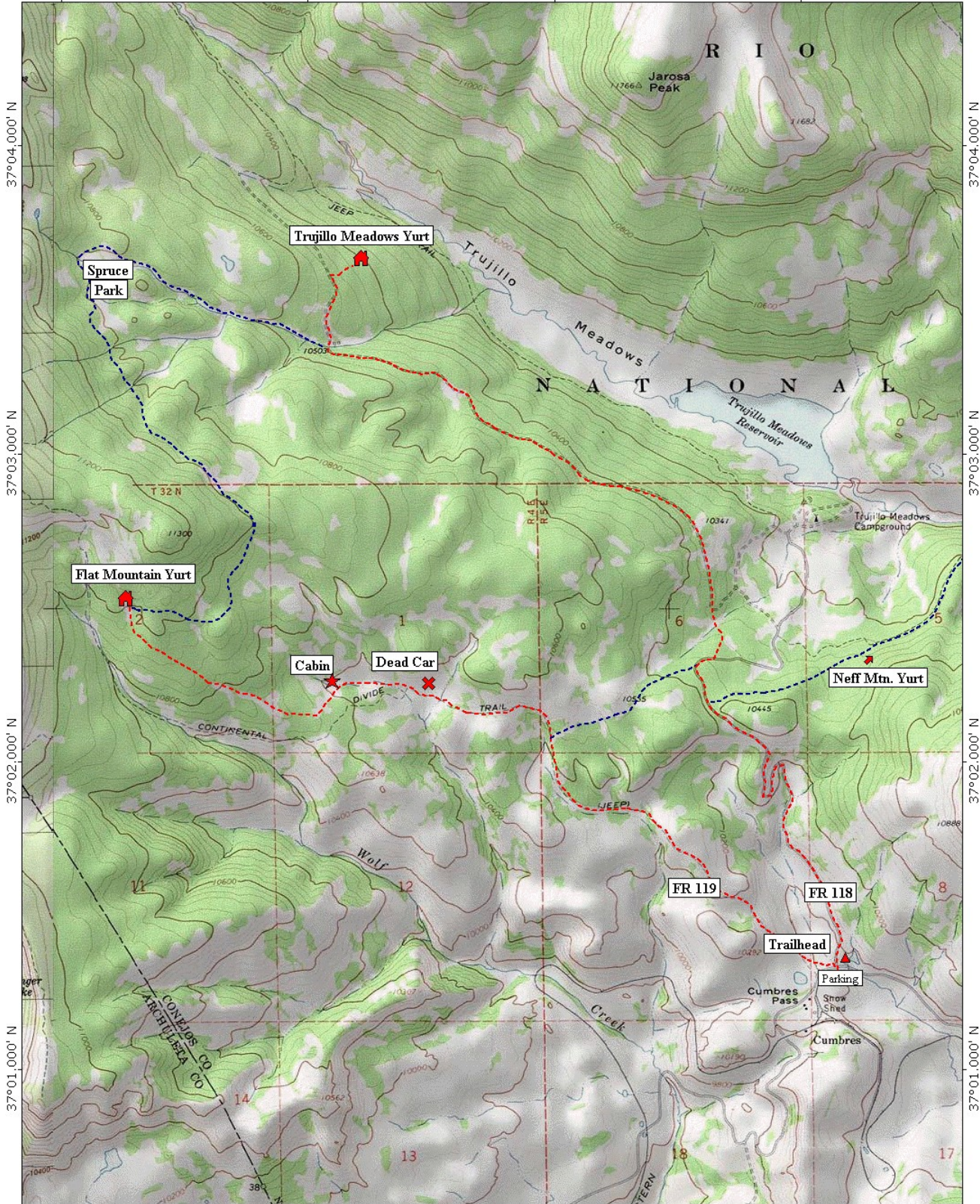
Safety-

The yurts are in the mountain backcountry. Travel in such a remote area can be hazardous. If you are using the yurts on an unguided basis you are responsible for your own safety. Every group should be prepared for any emergency that may arise. Ski repair and first aid kits should be carried (lists available upon request). Skill with map and compass is required. Those wishing to ski steeper terrain should be aware of avalanche dangers. If you are in doubt about a slope's stability then don't ski it! In the event of an emergency call SNC at (575) 758-4761, and for a rescue call the Conejos County Sheriff at (719) 376-5921.



Roads to the Yurts

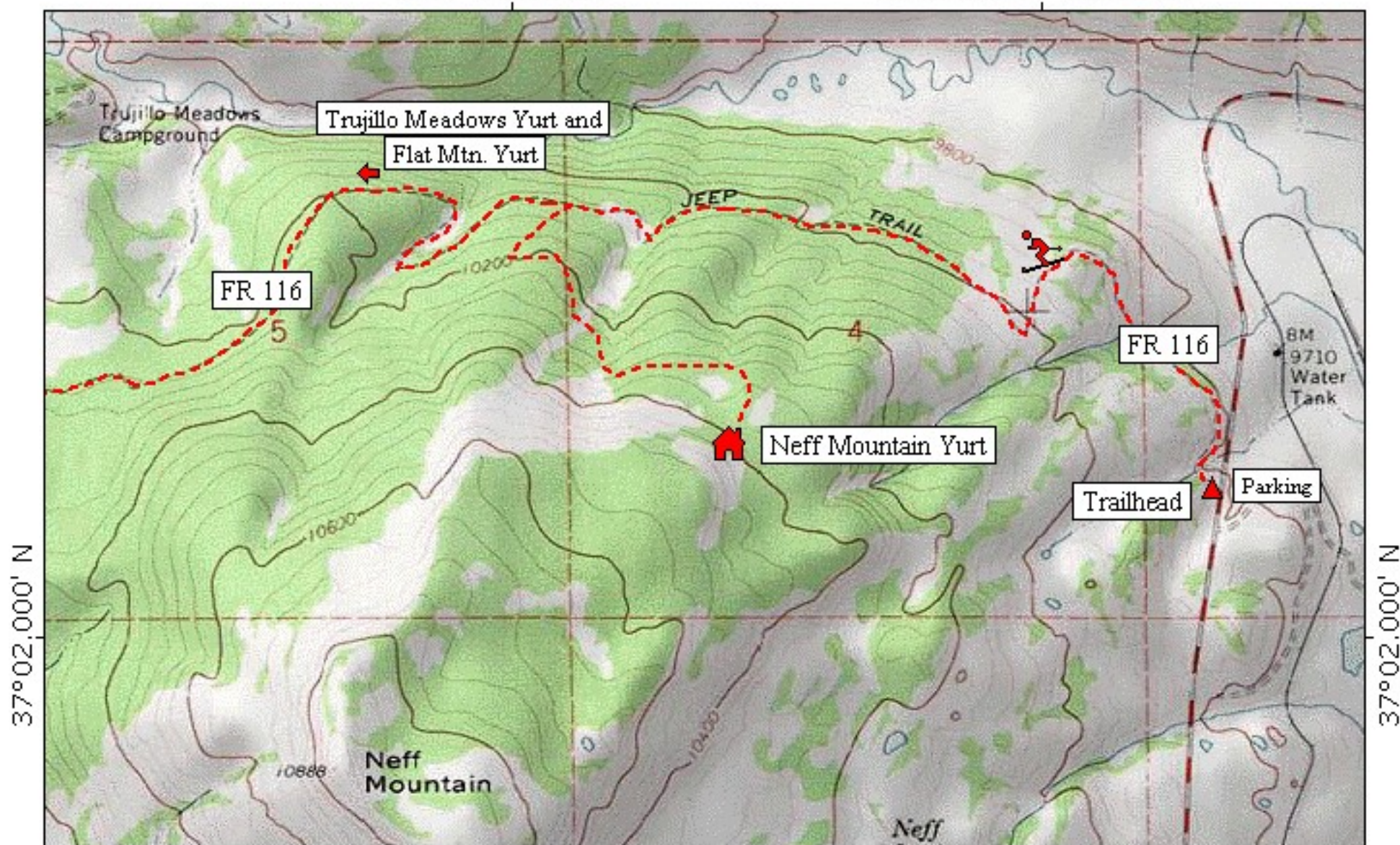




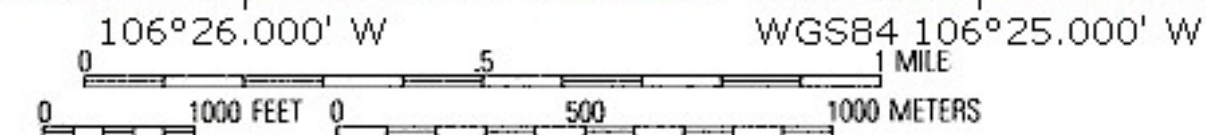
Neff Mountain Yurt Map

106°26.000' W

WGS84 106°25.000' W



TN * MN
10 1/2°



Printed from TOPO! ©2001 National Geographic Holdings (www.topo.com)

Trujillo Meadows Yurt-

Trailhead: On Colorado 17, .2 miles north of Cumbres Pass or 7.2 miles south of La Manga Pass, at the junction with FR 118, the Trujillo Meadows Reservoir Road.

Parking: Excellent parking on the west side of Colorado 17 at the pull out for FR 118, or on the east side just south of this pull out.

Trailhead Elevation: 10,022

Yurt Elevation: 10,500'

Yurt GPS: 37 03 602N; 106 28 873W

Mileage to the Yurt: 4 miles

Maps: Cumbres Pass, CO 7.5 min. USGS quad;
Rio Grande National Forest

Directions to the Trujillo Meadows Yurt- The trailhead is on Co. Highway 17 at Cumbres Pass. One begins at the pullout for Trujillo Meadows Reservoir, FR 118. The trail heads NNW up the right hand side of the meadow following FR 118. There will not be many markers until you enter the trees near the far end of the meadow. The color of the blazes for this trail are blue. At 1.4 miles along FR 118 you will pass FR 116, Neff Mtn. Road, on your right. For .2 miles you will see both blue and yellow markers. The yellow markers will turn left leading towards the Flat Mtn. Yurt trail. About .1 miles after that turnoff you will turn left, onto FR 118C. Take great care to look for this turn and follow the blue markers as they leave FR 118. Follow FR 118C for 1.9 miles. At this point the blue markers will turn to the right onto the road to the Upper Los Pinos, while yellow markers will begin straight ahead indicating the route from Trujillo Meadows Yurt to Flat Mtn. Yurt. Follow the blue markers for about .2 miles where the trail bends to the left, then look for a turn down and to the right which drops to the yurt just below.

Directions from Trujillo Meadows Yurt to Neff Mountain Yurt- Ski back up to FR 118C and turn left. Stay on this road for 1.9 miles until it comes to a tee at FR 118. Turn right and ski .3 miles (up to this point you have been retracing the route that you took to the yurt), where you will turn left onto FR 116, the Neff Mountain Road, which is marked with yellow markers and surveyor's tape. If you ski too far on FR 118 you will descend down a big hill back towards the highway. Follow FR 116 for 2.3 miles until it intersects the Neff Mountain Yurt Trail. At this point the markers will be blue. Be sure to turn right up the hill so that you head towards the yurt and not the Neff Mountain Yurt trailhead.

Neff Mountain Yurt-

Trailhead: On Colorado 17, 3.6 miles north of Cumbres Pass or 3.8 miles south of La Manga Pass, at the junction with FR 116, the Neff Mountain Road.

Parking: Excellent parking on the east side of Colorado 17.

Trailhead Elevation: 9,800'

Yurt Elevation: 10,400'

Yurt GPS: 37 02 319N; 106 25 583W

Mileage to the Yurt: 2.75

Maps: Cumbres Pass, CO 7.5 min. USGS quad
Rio Grande National Forest

Directions from Neff Mountain Yurt to the Neff Trailhead- Ski north from the yurt following the blue blazes until you locate the forest road that leaves the open meadow area and heads back below the Neff Mountain Bowl. Follow this well marked route back to FR 116, then turn right and follow FR 116 out to the trailhead.